



Reference List

**Process Equipment
Vessels &
Steel Structures**

BUILDS EQUALITY & CONFIDENCE

VISION

Leading product standards in the field of environmental technologies on global scale by engineering, design and manufacturing capabilities.

MISSION

Developing better quality, more efficient, longer lasting and more economical product solutions by carrying out R&D studies with high standard engineering and design resources. To be the guarantor of the functional life span of the products produced by providing the best quality production and after sales services belonging to these solutions.

VALUES

QUALITY

- Whatever the reason, we do not sacrifice quality in every input, process and output.
- Individually and institutionally our greatest dependence is high quality standards.
- When developing solutions, we pay attention to be above quality standards, strong and economical.

BUSINESS

- We act with integrity in all activities and strictly follow and enforce professional ethics.
- We contribute to both the national and global economy with our high-quality engineering solutions and the long-lasting equipment.
- With the awareness of conducting business in the global world, we show flexibility in thought and practice, we work with our strength to meet all needs under all conditions.
- We develop quality products and solutions that will enhance our customers' reputation, provide them with added value in every sense and act as solution partner at every step.
- We plan the integrity of the whole while analyzing the details.
- When we do business, we develop solutions even in the process, we work diligently to improve the project of our customers.
- We keep our reaction time to a minimum on encountered problems.

HUMAN

- Both work and social experiences of all our employees are important to us. We support them in every way and we are proud of their success.
- We work as a family and cooperate to achieve the best.
- We constantly add information to our knowledge, remembering that corporate development is rooted in human resources.
- We value labor, we work with family values within our company with long-term business relationships we build with our employees.

DEVELOPMENT

- We constantly research and strive to go beyond global standards.
- We follow the sector and the literature closely to develop effective solutions, we evaluate every opportunity for R & D studies.
- We continuously improve our processes, designs and products by carefully evaluating the experiences we gained.

ABOUT US

Astim is established and organized to design and manufacture various mechanical equipment for municipal and industrial water & wastewater treatment plants as well as specific process equipment, vessels and steel structures.

Established in 1980, Astim operates in the heart of industrial region of Turkey, Kocaeli – Dilovası Industrial Organized Region with 6.000 m² indoor and 8.000 m² outdoor manufacturing facility located close to Istanbul, surrounded with highways and harbors. Our facility is equipped with suitable machinery and tools for fabricating steel works up to 5.000 tons/year. Together with 70 colleagues consisting of experienced engineers, qualified technicians and certified welders, we develop system solutions, design & manufacture products and manage projects.

With vast experience in designing and manufacturing according to the international norms and standards such as; DIN-EN, AD 2000 Merkblatt HP-0, ASME, API650, EN ISO 3834-2, we have completed many international projects under control of well-known inspection companies such as TÜV, GL, BV and SGS.

WHAT WE DO;

Astim provides innovative solutions, competitive equipment and satisfaction oriented customer service for;

- ◆ Water & Wastewater Treatment
- ◆ Industrial Water Treatment
- ◆ Sludge Treatment
- ◆ Flue Gas & Odor Treatment
- ◆ Water Intake for Power Plants
- ◆ Process Equipment, Vessels and Steel Structures



EN ISO
9001 - 2008



EN ISO
3834 - 2



AD2000
Merkblatt HP 0



GOST

FACTORY AND MACHINE FACILITIES

Closed Factory Area	: 6000 m ²
Open Factory Area	: 8000 m ²
Factory Power	: 250 kVA+108 kVA Diesel Generator
Over Head Crane	: 20 ton (3 pcs), 10 ton (2 pcs), 5 ton (6 pcs)
Hydraulic Plate Bending Press	: 300 tons / 4 mt-1 pcs + 200 tons / 3 mt-1 pcs
Hydraulic Press	: 300 tons – 1 pcs
Eccentric Press	: 80 tons – 1 pcs
Plate Shearing Machine	: 16 mm / 3 mt-2 pcs
Roll Forming Machine	: 16 mm x 2000 mm
Punching & Shearing Machine	: 1 pcs
Auto. Oxyacetylene Cut	: One torch 1 pcs, double torch 2 pcs
Plasma Cutting Machine	: 2 pcs
Mig Mag Pulse Welding Mach.	: 4 pcs
Mig Mag Welding Machines	: 20 pcs
Welding Generators&Rectifiers	: 20 pcs
TIG Welding Machine	: 15 pcs
Drilling Machine	: Ø32 – 3 pcs
Radial Drilling Machine	: Ø50 – 1 pcs
Positioner For Tank Welding with Variable Speed	: 3 set
Emergency Diesel Generator	: 1 pcs
Lathe Ø800 x 2000	: 2 pcs
Copy Cutting Machine	: 1 pcs
Blasting Unit	: 1 pcs
Airless Spray Paint Equipment	: 1 pcs
Horizontal Bandsaw	: 2 pcs
Circular Saw	: 1 pcs
Magnetic Drilling Machine	: 5 pcs
Air Compressor, 55 kw	: 1 pcs





**TANKS, SILOS,
MIXERS,
FLUE GAS**

&

**OTHER SPECIALS
EQUIPMENTS**

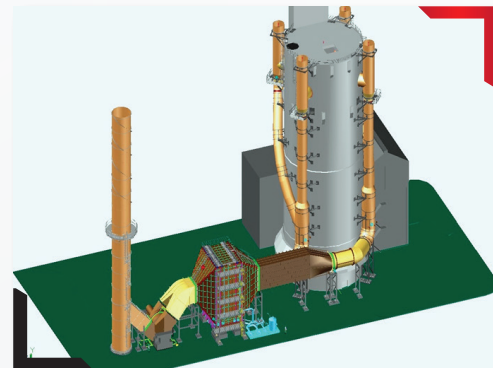
PROJECT	: WATERLEAU FRANCE – PRILL TOWER WASTE GAS SYSTEM
CUSTOMER	: WATERLEAU FRANCE
PROJECT NAME	: Toros Tarim Prill Tower Project
MANUFACTURING YEAR	: 2015-2017



SCOPE OF SUPPLY

Complete 57mt. Prill Tower waste gas treatment system supply complete with static calculation acc. to EN norms and FEA, general and manufacturing projects, material supply, manufacturing, transportation, assembly at site. Approx. 480 tons of System includes;

1. 4 pcs. Ø3000mm By-Pass System with pneumatic actuated dampers (Delivered)
2. Complete ducting system from 45mt. elevation by-pass outlet to scrubber inlet
3. 1 pcs. L17.400xW10.000xH15.650 mm Scrubber
4. Fan assembly
5. 1 pcs. Ø5.000mm.x H:60mt Stack; Material: AISI304L
6. All process piping; Material: AISI304L



PROJECT

: WATERLEAU FRANCE – WASTE GAS SCRUBBERS

CUSTOMER

: WATERLEAU FRANCE

PROJECT NAME

: Cherepovets Project

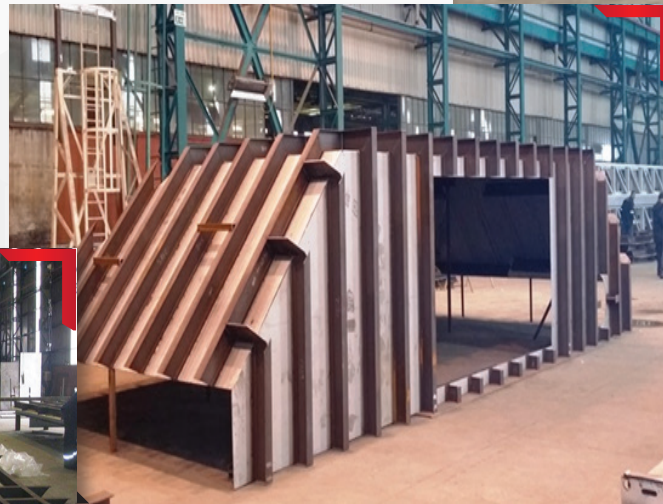
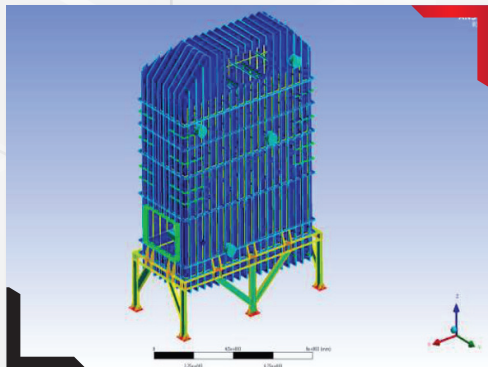
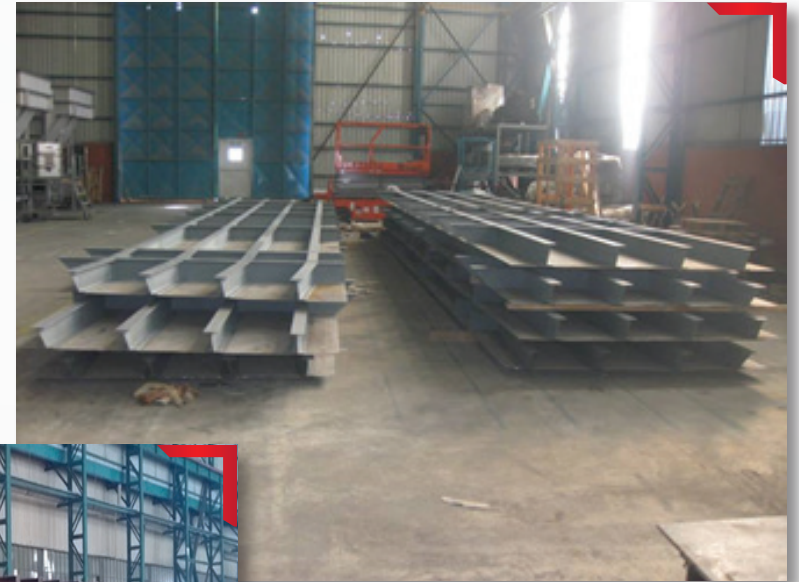
MANUFACTURING YEAR

: 2015-2016



SCOPE OF SUPPLY

1 pcs. L9.000xW4.000xH14.350 mm Scrubber pre-manufacturing supply complete with static calculation acc. to AD-2000 and FEA, general and manufacturing projects, material supply, manufacturing, seaworthy packing and FOB nearest port; Material: AISI304L+CS



PROJECT : WATERLEAU BELGIUM – WASTE GAS SCRUBBERS
CUSTOMER : WATERLEAU BELGIUM
PROJECT NAME : Ammonia and Urea Project
MANUFACTURING YEAR : 2014-2015



SCOPE OF SUPPLY

1 pcs. L20.000xW5.000xH19.200 mm Granulator Scrubber supplied complete with static calculation acc. to ASME Sec.8 Div.2 and FEA, general and manufacturing projects, material supply, manufacturing, seaworthy packing and FOB nearest port; Material: AISI304L+CS

1 pcs. L10.000xW5.000xH17.500 mm Cooler Scrubber supplied complete with static calculation acc. to ASME Sec.8 Div.2 and FEA, general and manufacturing projects, material supply, manufacturing, seaworthy packing and FOB nearest port; Material: AISI304L+CS



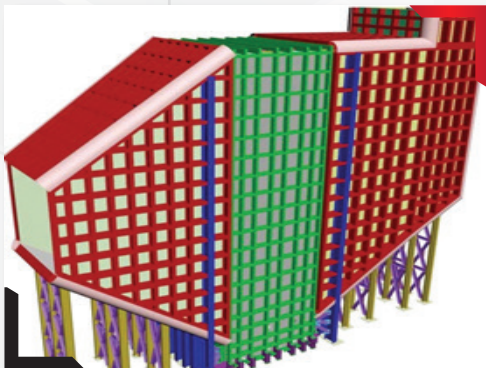
PROJECT : WATERLEAU FRANCE – WASTE GAS SCRUBBERS
CUSTOMER : WATERLEAU FRANCE
PROJECT NAME : PetroBras Brasil
MANUFACTURING YEAR : 2013-2014



SCOPE OF SUPPLY

1 pcs. L5.000xW5.000xH17.200 mm Granulator Scrubber supplied complete with basic and detail study for all and workshop drawing for the middle section; material supply, manufacturing, seaworthy packing and FOB nearest port of middle section and some accessories, static calculation acc. to ASME Sec.8 Div.2 and FEA; Material: AISI316L+CS

1 pcs. L3.500xW5.000xH14.000 mm Granulator Scrubber supplied complete with basic and detail study for all and workshop drawing for the middle section; material supply, manufacturing, seaworthy packing and FOB nearest port of middle section and some accessories, static calculation acc. to ASME Sec.8 Div.2 and FEA; Material: AISI316L+CS



PROJECT : WATERLEAU FRANCE – WASTE GAS SCRUBBERS
CUSTOMER : WATERLEAU FRANCE
PROJECT NAME : Saipem SAFCO-V, K.S.A
MANUFACTURING YEAR : 2012-2013



SCOPE OF SUPPLY

1 pcs. L15.000xW5.000xH27.000 mm Granulator Scrubber supplied complete with static calculation acc. to ASME Sec.8 Div.2 and FEA, general and manufacturing projects, material supply, manufacturing, seaworthy packing and FOB nearest port; Material: AISI316L+CS

1 pcs. L15.000xW5.000xH18.000 mm Cooler Scrubber supplied complete with static calculation acc. to ASME Sec.8 Div.2 and FEA, general and manufacturing projects, material supply, manufacturing, seaworthy packing and FOB nearest port; Material: AISI304L+CS



PROJECT

: CARBOVAC – PRESSURIZED ADSORBER VESSEL

CUSTOMER

: CARBOVAC

PROJECT NAME

: Terneuzen Fuel Vapor Recovery System - Holland

MANUFACTURING YEAR

: 2013



SCOPE OF SUPPLY

4 pcs. Ø3.800x4.000 mm Adsorber Vessel supplied complete with legs, manholes, sight glasses, nozzles etc.. test pressure of 6 bars; Material: P355GH, 16.200 kg, Acc. To EN13445

1pcs. Ø3.000x6.000 mm Adsorber Column supplied complete with legs, manholes, sight glasses, nozzles etc.. test pressure of 6 bars; Material: P355GH, 10.050 kg, Acc. To EN13445



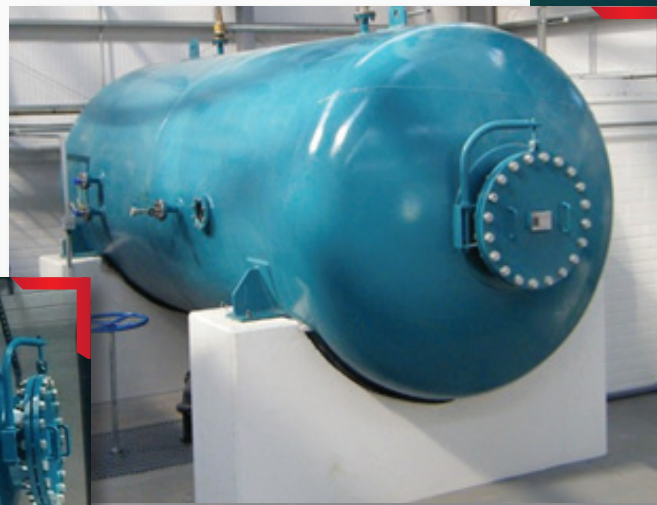
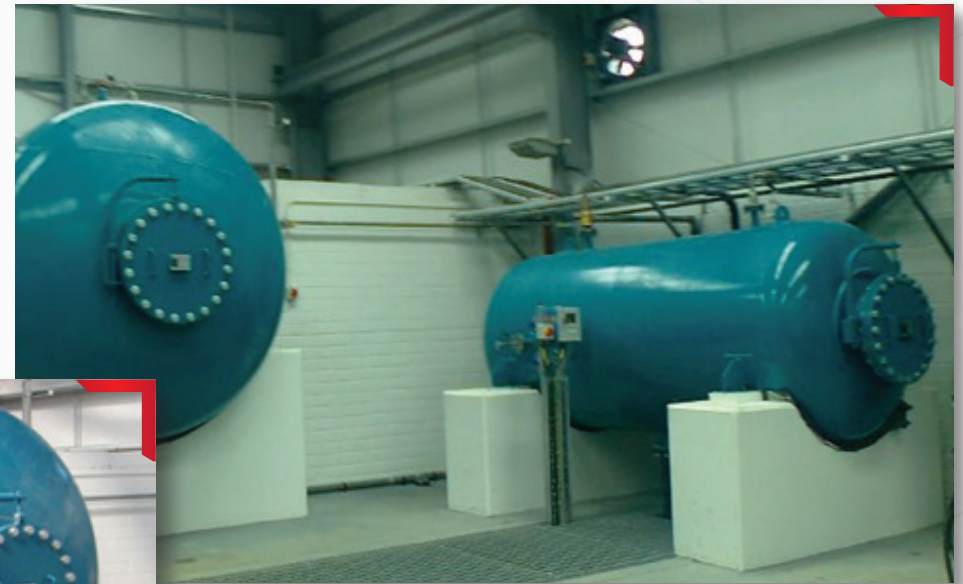
PROJECT : VEOLIA IRELAND – PRESSURIZED SURGE VESSEL
CUSTOMER : VEOLIA IRELAND
PROJECT NAME : Srowland WTP
MANUFACTURING YEAR : 2012



SCOPE OF SUPPLY

1 pcs. Ø2.250x6.300 mm Old Kilcullen Surge Vessel supplied complete with legs, manholes, sight glasses, nozzles etc.. test pressure of 21 bars; Material: P355GH, 7.000 kg, Acc. To PD 5500

1 pcs. Ø1.500x3.900 mm Ardscoil Reservoir Surge Vessel supplied complete with legs, manholes, sight glasses, nozzles etc.. test pressure of 15 bars; Material: P355GH, 3.100 kg, Acc. To PD 5500



PROJECT

: IRAQ TIKRIT 50-200m³/ h PRESSURIZED SAND FILTER

CUSTOMER

: IRAQ/TIKRIT

PROJECT NAME

: Iraq Tikrit Treatment plant

MANUFACTURING YEAR

: 2011-2012



SCOPE OF SUPPLY

8pcs. Ø2.100x1.500 mm. Vertical Sand Filter Tanks supplied complete with legs, manholes, nozzles etc.. max. design pressure of 5bars; Material: ST 37, 3.200 kg/each with necessary piping works.

12pcs. Ø2.300x6.000 mm. Horizontal Sand Filter Tanks supplied complete with legs, manholes, nozzles etc.. max. design pressure of 9bars; Material: ST 37, 9.100 kg/each with necessary piping works.



PROJECT	: GÜNERİ MAKİNE - VACUUM TANKS
CUSTOMER	: GÜNERİ MAKİNE
PROJECT NAME	: Güneri Makina Project
MANUFACTURING YEAR	: 2011



SCOPE OF SUPPLY

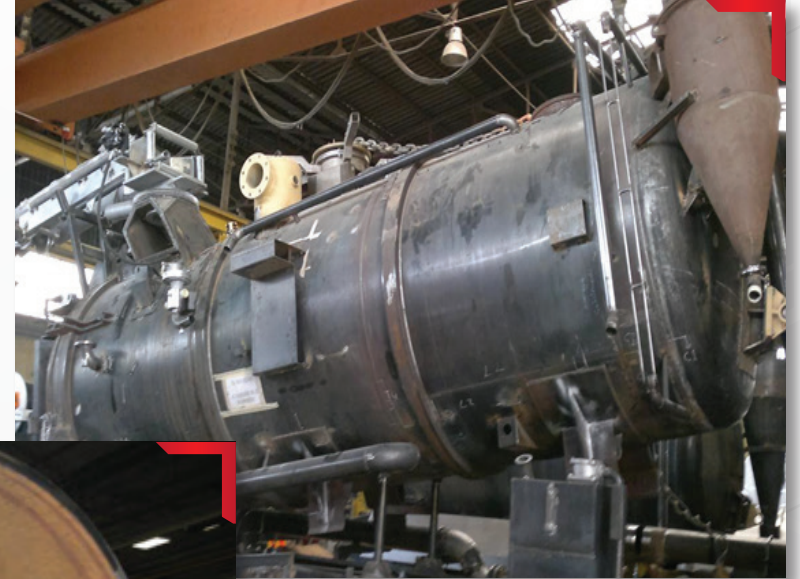
1 pcs. Ø1.800x3.800 mm Vacuum tank supplied complete with manhole ST 37, 1.880 kg.

1 pcs. Ø1.850x4.125 mm Vacuum tank supplied complete with manhole AISI 316L, 2.000 kg.

2 pcs. Ø1.700x3.200 mm Vacuum tank supplied complete with manhole AISI 316L, 2.940 kg.

1 pcs. Ø1.800x4.000 mm Vacuum tank supplied complete with manhole AISI 316L, 1.900 kg.

2 pcs. Ø1.800x4.750 mm Vacuum tank supplied complete with manhole ST 37, 2.340 kg.



PROJECT

: ARBIOGAZ – BOLTED FIELD TANK

CUSTOMER

: ARBIOGAZ

PROJECT NAME

: Fritolay Saudi Snack WWTP, K.S.A.

MANUFACTURING YEAR

: 2011

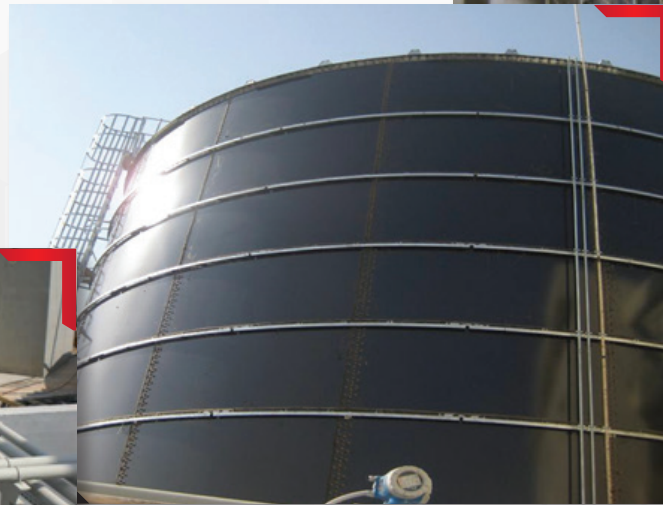


SCOPE OF SUPPLY

Supply and Assembly of glass fused bolted tank from Permastore, England, Ø12.800x12.000mm

1pcs Ø1.200x1650 mm. Conventional Sand Filter Tanks supplied complete with legs, manholes, nozzles etc.. test pressure of 4 bars; Material: ST

Totally 37.800 kg



PROJECT : ARBiOGAZ – LIME SILO
CUSTOMER : ARBiOGAZ
PROJECT NAME : Muğla Municipality WWTP
MANUFACTURING YEAR : 2013



SCOPE OF SUPPLY

1 pcs. Ø1.900x4.300 mm Lime Silo supplied complete with legs, manholes, ladder, top railing etc.. Material: ST 37, 1.700 kg.



PROJECT

: EBARA – GAS HOLDER AND DESULFURIZER

CUSTOMER

: EBARA

PROJECT NAME

: Astana Project

MANUFACTURING YEAR

: 2009



SCOPE OF SUPPLY

1pcs. Ø14700x9000 mm Gas Holder Tank supplied complete with legs, manholes, ladder, top railing, supporting system etc.. working pressure of +25mbar between -5mbar; Material: ST37, AISI316L , 90 tons

1pcs. Ø2000x7200 mm Desulfurizer Tank supplied complete with manholes, ladder, nozzles etc.. Treatment capacity 460 m³/h; Material: ST 37, AISI304 , 6.900 kg.



PROJECT : FRITOLAY – REACTOR TANK
CUSTOMER : FRITOLAY
PROJECT NAME : Fritolay WWTP
MANUFACTURING YEAR : 2008



SCOPE OF SUPPLY

1 pcs. Ø12.400x10500 mm Reactor Tank supplied complete with manholes, ladder, top railing, nozzles etc.. ST 37, 44.5 tons



PROJECT**: NOVASEP – RUBBER COATED PRESSURIZED VESSEL****CUSTOMER****: NOVASEP EUROASIA****PROJECT NAME****: Çumra Şeker Project****MANUFACTURING YEAR****: 2008****SCOPE OF SUPPLY**

1 pcs. Ø 2.200 x 3.000 mm. Mixed Bed Exchanger Tanks supplied complete with supporting legs, manholes, sight glasses, nozzles etc. Max. Working Pressure of 3 bars; Material: CS with 3 mm. Rubber Coating Inside

1 pcs. Ø 1.400 x 2.500 mm. Hydrolyze Column supplied complete with supporting legs, manholes, sight glasses, nozzles etc. Max. Working Pressure of 3 bars; Material: CS



PROJECT

: H&E – PRESSURIZED SAND FILTERS AND BIO-FILTERS

CUSTOMER

: HAGER & ELSAESSER (Germany)

PROJECT NAME

: Tula WWTP (Russia)

MANUFACTURING YEAR

: 2008



SCOPE OF SUPPLY

2 pcs. Ø 2.500 x 2.500 mm. Sand Filter Tanks supplied complete with supporting legs, manholes, sight glasses, nozzles etc. Max. Working Pressure of 6 bars; Material: CS

2 pcs. Ø 2.600 x 5.120 mm. Bio-Filter Tanks supplied complete with supporting legs, manholes, sight glasses, nozzles etc.; Material: CS



PROJECT

: ANDRITZ – KONDENSER AND BUNKER

CUSTOMER

: ANDRITZ (Switzerland)

PROJECT NAME

: Antalya Hurma WWTP Sludge Drying Plant

MANUFACTURING YEAR

: 2007 / 2008



SCOPE OF SUPPLY

Steel Construction Building with SS Grating & Handrails

1 pcs. Ø 2.500 x 8.000 mm. Kondenser Tank supplied complete with manholes, sight glasses, nozzles etc. Material: Complete AISI 304

1 pcs. Bunker with dimensions (W x L x H): 5.000 x 5.200 x 1.650 mm.,
Material: AISI 304 & Carbon Steel

1 pcs. Bunker with dimensions (W x L x H): 2.900 x 7.000 x 2.100 mm.,
Material: AISI 304 & Carbon Steel



PROJECT	: C&H – PRESSURIZED FILTER TANKS
CUSTOMER	: CHRIST HOLLAND B.V
PROJECT NAME	: SIEMENS Project, Netherlands
MANUFACTURING YEAR	: 2007 / 2008



SCOPE OF SUPPLY

4 pcs. Ø 2.000 x 2.700 mm. Mixed Bed Exchanger Tanks supplied complete with supporting legs, manholes, sight glasses, nozzles etc. Max. Working Pressure of 10 bars; Material: CS with 3 mm. Rubber Coating Inside

1 pcs. Ø 1.600 x 4.500 mm. Separation/Cation Reg. Filter Tank supplied complete with supporting legs, manholes, sight glasses, nozzles etc. Max. Working Pressure of 6 bars; Material: CS with 3 mm. Rubber Coating Inside

1 pcs. Ø 1.400 x 4.500 mm. Mixing/Anion Reg. Filter Tank supplied complete with supporting legs, manholes, sight glasses, nozzles etc. Max. Working Pressure of 6 bars; Material: CS with 3 mm. Rubber Coating Inside.

2 pcs. Ø 1.400 x 2.500 mm. Gravel Filter Tank supplied complete with supporting legs, manholes, sight glasses, nozzles etc. Max. Working Pressure of 6 bars; Material: CS

2 pcs. Ø 1.400 x 2.700 mm. Active Carbon Filter Tank supplied complete with supporting legs, manholes, sight glasses, nozzles etc. Max. Working Pressure of 6 bars; Material: CS

4 pcs. Ø 800 x 3.000 mm. Mixed Bed Exchanger Tanks supplied complete with supporting legs, manholes, sight glasses, nozzles etc. Max. Working Pressure of 6 bars; Material: CS with 3 mm. Rubber Coating Inside

Manufacturing of Necessary CS Platforms and carrying out necessary Piping Works



PROJECT

: C&H – PRESSURIZED FILTER TANKS

CUSTOMER

: CHRIST HOLLAND B.V.

PROJECT NAME

: Zicunaga Project, Spain

MANUFACTURING YEAR

: 2007



SCOPE OF SUPPLY

2 pcs. Ø 1.600 x 2.500 mm. Mixed Bed Exchanger Tanks supplied complete with supporting legs, manholes, sight glasses, nozzles etc.. Max. Design Pressure of 10bars; Material: CS

Manufacturing of Skid for Exchanger Tanks (Σ : ~1.500 kg) and; Material: CS + Sand B. + Epoxy Coating

Necessary Piping Works



PROJECT : FAUDI AVIATION - Pressure Vessels for Jet Fuel - Water Separation
CUSTOMER : FAUDI AVIATION
PROJECT NAME : Pressure Vessels for Jet Fuel - Water Separation
MANUFACTURING YEAR : 2004 / 2005



SPECIAL FILTER VESSELS

CS, Working Pressure 16 Bar; Between Ø700 - Ø1250, 13 pcs



PROJECT

: BIRAY GROUP - NIGERIA Potation Water Treatment Plant

CUSTOMER

: BIRAY GROUP

PROJECT NAME

: NIGERIA Potation Water Treatment Plant

MANUFACTURING YEAR

: 2006 - 2007



HORIZONTAL SAND FILTERS

st37, Ø2200X6000, 3 Bar, Weight: 5800 Kg/Each



PROJECT : NSC - SYRIA Industrial Waste Water Treatment Plant
CUSTOMER : NSC - SYRIA
PROJECT NAME : Industrial Waste Water Treatment Plant
MANUFACTURING YEAR : 2007



VERTICAL SAND FILTERS

st37, Ø2800 X 2500, 5 Bar, Wights: 4700Kg / Each



PROJECT

: ISDEMIR - HOOD CAR

CUSTOMER

: ISDEMIR DEMIR CELIK A.S. (Turkiye)

PROJECT NAME

: Hood Car Manufacturing Project (Davlumbaz Arabası)

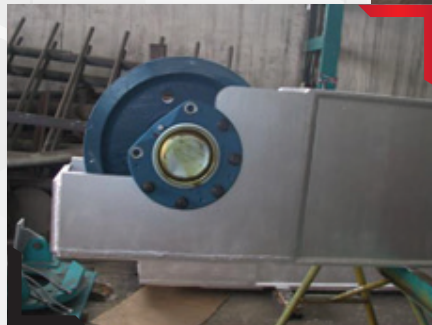
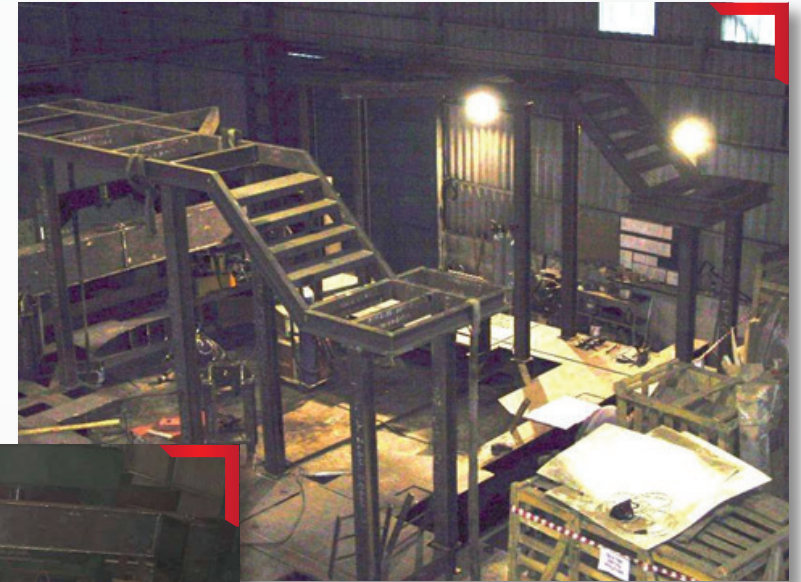
MANUFACTURING YEAR

: 2005 / 2007



SCOPE OF SUPPLY

3 pcs. of 25 tons/pcs. Hood Cars supplied complete with steel construction, drive units with Ø680 wheels, walking platforms and handrails, hydraulic damper supports.



PROJECT

: ARBIOGAZ - Akteks Waste Gas Treatment Plant

CUSTOMER

: ARBIOGAZ

PROJECT NAME

: Akteks Waste Gas Treatment Plant

MANUFACTURING YEAR

: 2002



WET GAS SCRUBBER

Ø4 X 28 m AISI 316 High Molybdenum SS, Empty Weight: 20 Tons



PROJECT

: VA TECH WABAG – PRESSURIZED FILTER TANKS

CUSTOMER

: VA TECH WABAG (Germany) Project

PROJECT NAME

: Youssifiyah Project, Iraq

MANUFACTURING YEAR

: 2002



SCOPE OF SUPPLY

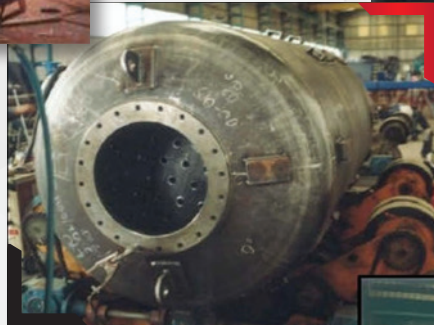
4 pcs. of Sand Filter Tanks, Ø 4000 x 4600 mm, 6 bar test pressure

2 pcs. of Mixed Bed Exchanger tank, Ø 1700 x 3300mm, 6 bar test pressure

4 pcs. of Cation Exchanger tank, Ø 1400 x 2250mm, 6 bar test pressure

4 pcs. of Anion Exchanger tank, Ø 1400 x 3300mm, 6 bar test pressure

19 pcs. of tanks in various dimensions in between with Ø 5500 x 16000 mm



1, 2, 3 Anion & Cation Exchanger Tank

PROJECT

: Lime Silo for Steuler - Birlik Enerji Waste Gas Treatment Plant

CUSTOMER

: STEULER

PROJECT NAME

: Birlik Enerji Waste Gas Treatment Plant

MANUFACTURING YEAR

: 2001



SCOPE OF SUPPLY

Ø3,8 x 13m CS + Epoxy



PROJECT : ARBIOGAZ - Waste Gas Treatment Plant
CUSTOMER : ARBIOGAZ
PROJECT NAME : Oguzhan Tekstil Ind. Waste Gas Treatment
YEAR : 1999

SCOPE OF SUPPLY

Ø2000 x 9000, AISI 316Ti SS, Empty Weight: 4 Tons

Design, Manufacturing, Transportation and Erection at Site 2



PROJECT : Bandirma Fac. Stainless Steel Piping
CUSTOMER : MAURI YEAST Co.
PROJECT NAME : Stainless Steel Piping - MAURI YEAST
YEAR : 1995

SCOPE OF SUPPLY

Ø AISI 304 Quality SS Material, from Ø110 Till Ø400 mm, Totally 400 m Stainless Steel Pipe Manufacturing and Erecting with Related Instruments and Welding.

Design, manufacturing, transportation and erection at site



PROJECT : Beymen Shoe Fac. Dust Collecting Sys.
CUSTOMER : ALBOY
PROJECT NAME : Jet Pulse Bag Filter
YEAR : 1998



PROJECT : Dust Collecting System
CUSTOMER : CİHANGİR DERİ
PROJECT NAME : Multi - Cyclone Manufactures
YEAR : 1998



PROJECT

: Sugar Silos

CUSTOMER

: KENT FOOD Industries

PROJECT NAME

: KENT FOOD Industries Sugar Silos

MANUFACTURING YEAR

: 1997



SCOPE OF SUPPLY

Ø4 m diameter x 28 m length, AISI 304 quality stainless steel, empty weight 24 tons/each

Scope of Work: Desing, manufacturing, transport and erection



PROJECT : Flour Silos
CUSTOMER : ISTANBUL MUNICIPALITY Bread Factory
PROJECT NAME : Flour Silos for ISTANBUL MUNICIPALITY
MANUFACTURING YEAR : 1998

SCOPE OF SUPPLY

ø3m Diameter X 17 M Length, AISI304 SS, Empty Weight: 9 Tons/Each

Manufacturing, Transportation and Erection at Site



PROJECT

: Industries Glicose Tanks

CUSTOMER

: KENT FOOD

PROJECT NAME

: KENT FOOD Industries Glicose Tanks

MANUFACTURING YEAR

: 1997



SCOPE OF SUPPLY



Ø4 m Diameter x 9 m Length, AISI 316 SS Material, Empty Weight: 9 Tons/Each

Design, Manufacturing and Transportation



PROJECT

: Manufacturing of Yeast Fermentation Tanks

CUSTOMER

: MAURI MAYA Industry

PROJECT NAME

: MAURI MAYA - Manufacturing of Yeast Fermentation Tanks

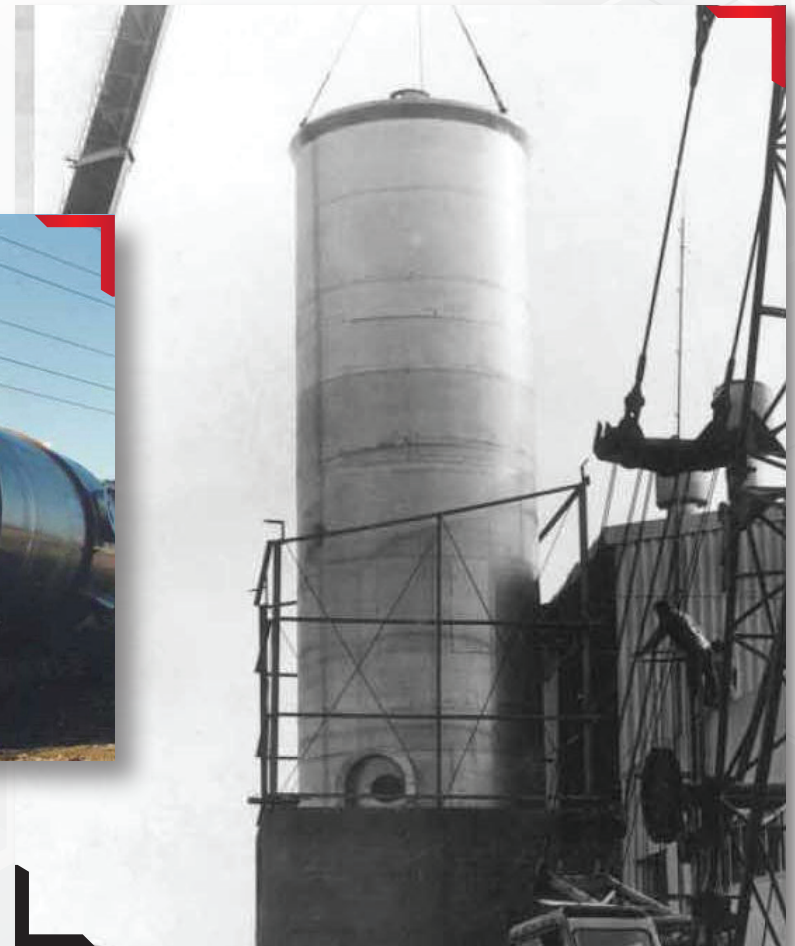
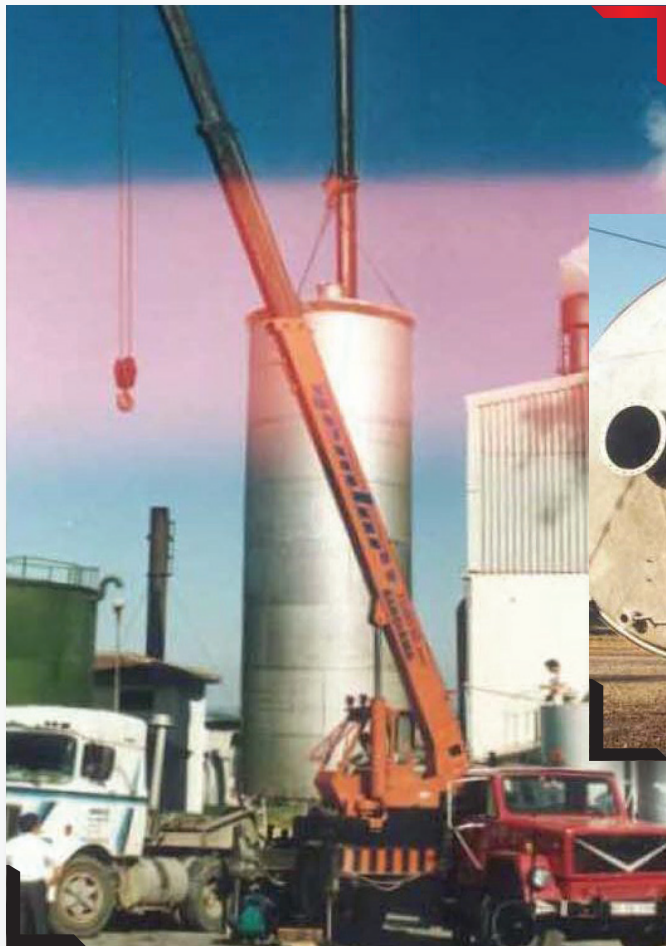
MANUFACTURING YEAR

: 1989 - 1991

SCOPE OF SUPPLY

Ø4000 X 13000, AISI 304 SS, Inside Welds Grinding and 220 Grid Emery, Empty
Weight: 9000 Kg

Design, Manufacturing, Transportation, Piping and Mounting



PROJECT

: Yeast Reactors

CUSTOMER

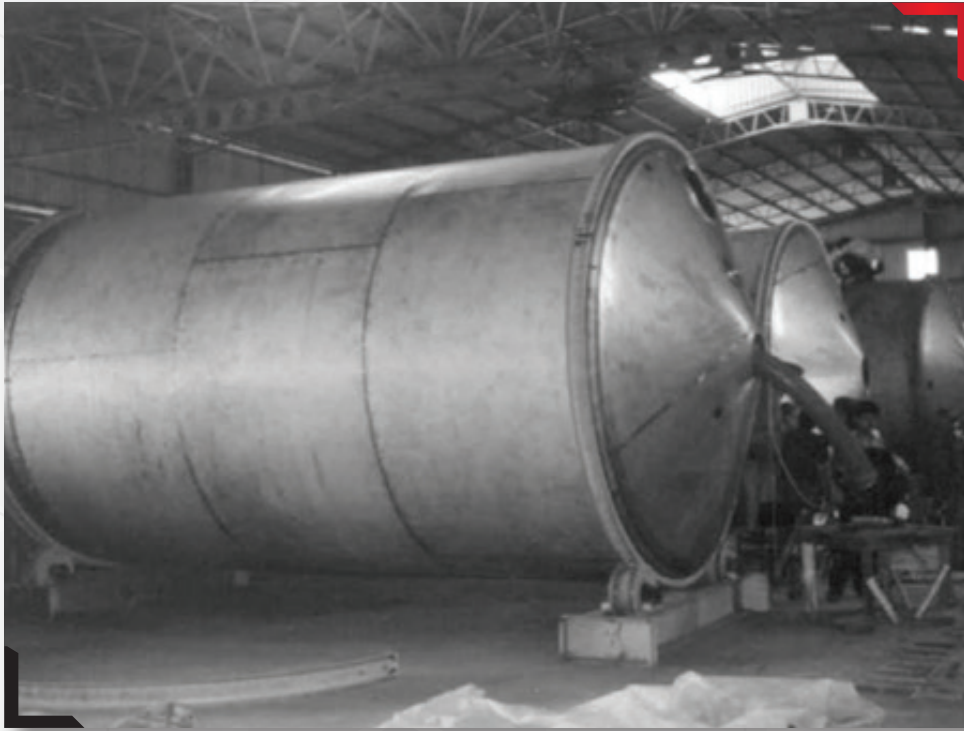
: Mauri Yeast Co.

PROJECT NAME

: Yeast Reactors - Bandirma

MANUFACTURING YEAR

: 1989



Ø3250 X 6000, AISI 304 SS, With Agitator and Cooling Serpantine; Isolated with Polyurethane, Covered with Stainless Jacket to Provide Isolation and Inside Completely Polysage.

Design, Manufacturing, Transportation, Erection And Stainless Steel Piping.



PROJECT : Flue Gas Treatment Plant Chemical Tanks
CUSTOMER : STEULER
PROJECT NAME : Flue Gas Treatment Plant Chemical Tanks - Germany
MANUFACTURING YEAR : 1999

CHEMICAL TANKS



AISI 316Ti SS, Cover with Pneumatic Piston, Empty Weight: 2200 Kg/Each

Scope of Work: Manufacturing and Transportation

PROJECT : Pressurized Accumulation & Hot Water Tanks
CUSTOMER : ANIDA CONSTRUCTION
PROJECT NAME : KENT FOOD Industries Equipments
YEAR : 1998 - 1999

PROJECT : Kerosene Tank
CUSTOMER : COSTER VALVE
PROJECT NAME : COSTER VALVE - Kerosene Tank
YEAR : 1995



AISI 304 SS, Working Pressure 8 atu, Test Pressure 12 atu, Between Ø1600 - 2000 mm Diameters, Radiographic Controlled.

Design, Manufacturing and Transportation.



AISI 304 SS, Ø2200 - 4000, with Agitator and Ex-Proof Motor, Weight: 2500 kg

Design, Manufacturing, Transportation and Erection.

PROJECT

: CIP Tanks

CUSTOMER

: EFES PILSEN

PROJECT NAME

: EFES PILSEN Istanbul Brewery Factory CIP Tanks

MANUFACTURING YEAR

: 1994 - 1995

SCOPE OF SUPPLY

AISI 304 SS, Inside Walls Grinding and 220 Grid Emery, Empty - Weights: 1000 ÷ 2000 Kg/Each

Manufacturing + Transportation



PROJECT : Caustic Soda Tanks - Libya
CUSTOMER : TEKSER Company
PROJECT NAME : Caustic Soda Tanks at Libya for TEKSER
YEAR : 2007

PROJECT : Water Conditioning Tanks
CUSTOMER : EFES PILSEN
PROJECT NAME : Brewery Factory - Water Conditioning Tanks
YEAR : 2007



SCOPE OF SUPPLY

Design, Manufacturing, and Erection at Site



Design, Manufacturing, and Erection at Site

PROJECT : Oil Reactors
CUSTOMER : UNILEVER
PROJECT NAME : Oil Reactors - Adana Factory
YEAR : 1989

SCOPE OF SUPPLY

Ø4 M Diameter, 9 M Length, Heater By Steam Coil, With Agitator Tank. St. 37 Material + Outside Epoxy Paint. Weight: 20 Tons/Each = 40 Tons

Manufacturing and Transportation



PROJECT : Sand Filters
CUSTOMER : CARGILL Food Industry
PROJECT NAME : Sand Filters - Orhangazi Factory
YEAR : 1999



Capacity: 90 M3/H, Inside and Outside Sandblasting + Epoxy Coating, Full Automatic. Complete Weight: 24 Tons.

Project of Filter Tanks and Piping, Manufacturing, Transportation, Erection and Piping as Turnkey Basis.

PROJECT

: Double Paddle Mixer and Screw Conveyor

CUSTOMER

: BETA GROUP

PROJECT NAME

: Double Paddle Mixer and Screw Conveyor - Cargill Russia

MANUFACTURING YEAR

: 2000



Paddle Mixer: Body, Mixer Shaft and Paddles Are AISI 316 SS, Front and Back Covers Are CS + AISI 316 SS Cladding, Construction And Supports Are CS + Sandblasting + Epoxy Coating, Total Weight: 9000 Kg. Screw Conveyor: 14 M Length, Weir Plate Is Stainless Steel

Production Design, Manufacturing, Tests



PROJECT

: USGB Types Anaerobic Waswater Treatment Plants

CUSTOMER

: ARBIOGAZ

PROJECT NAME

: Anaerobic Waswater Treatment Plants in Licencing with Biothane - Netherlands

MANUFACTURING YEAR

: 1996 - 2009



EXPERIENCE AND QUALITY ALL AROUND THE WORLD

800 projects in 30 countries on 5 continents as solution partner of many international contracting companies.





**ASTİM Endüstri Tesisleri
İmalat Montaj ve Taahhüt A.Ş.**

Dilovası O.S.B. 4. Kısım Ceyhan Cad.
No:10 41400 Gebze KOCAELİ / TÜRKİYE

P: +90 262 724 85 50 F: +90 262 724 85 49
astim@astim.web.tr www.astim.web.tr

